

THE FUTURE LOOKS BRIGHT

2024 Annual Report





Photo: Chris Gilbert

Thank you, Julia Philbrick, for your excellent work on this report.
You landed it!

June 11, 2025

Dear Friend,

2024 was a successful year for the Conservancy, and the future is looking bright.

Progress continues at Boulder Outlook. In 2024, the Escondido Community Foundation awarded the Conservancy a grant to build an outdoor classroom; that work is underway. On the cover is one of the hard-working members of the California Conservation Corps who took a minute to rest and enjoy the view from our office. Your support has helped create these moments of awe, where a better future can be seen and embraced.

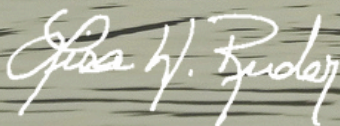
Nature can be resilient and so are we.

Over its three plus decades, the Conservancy has won grants and donations from the federal and state governments and private partners, funds that it has used to acquire land to protect it in perpetuity in a system of expanding nature preserves.

For decades, the Conservancy has had a close partnership with the federal government which has resulted in the saving of thousands of acres of land, protected forever so that threatened and endangered, and common, species can have a secure place to call home. For example, with the support of federal funding, the Conservancy created the 1,000-acre+ Keithley Preserve in Elfin Forest, and other wildlife preserves, now protected, never to be developed.

In 2024, the Conservancy was awarded federal endangered species funding as a 50% match contribution towards our three pending *Connecting Conservation Corridors* acquisitions. We are currently working with the state and private donors to secure the balance. At this writing, that federal funding appears secure but may later be at risk. We continue to work to complete these transactions while we also look to the future at additional landscapes to protect. Our work continues without pause.

We hope that you enjoy this report and will contact us with any questions.

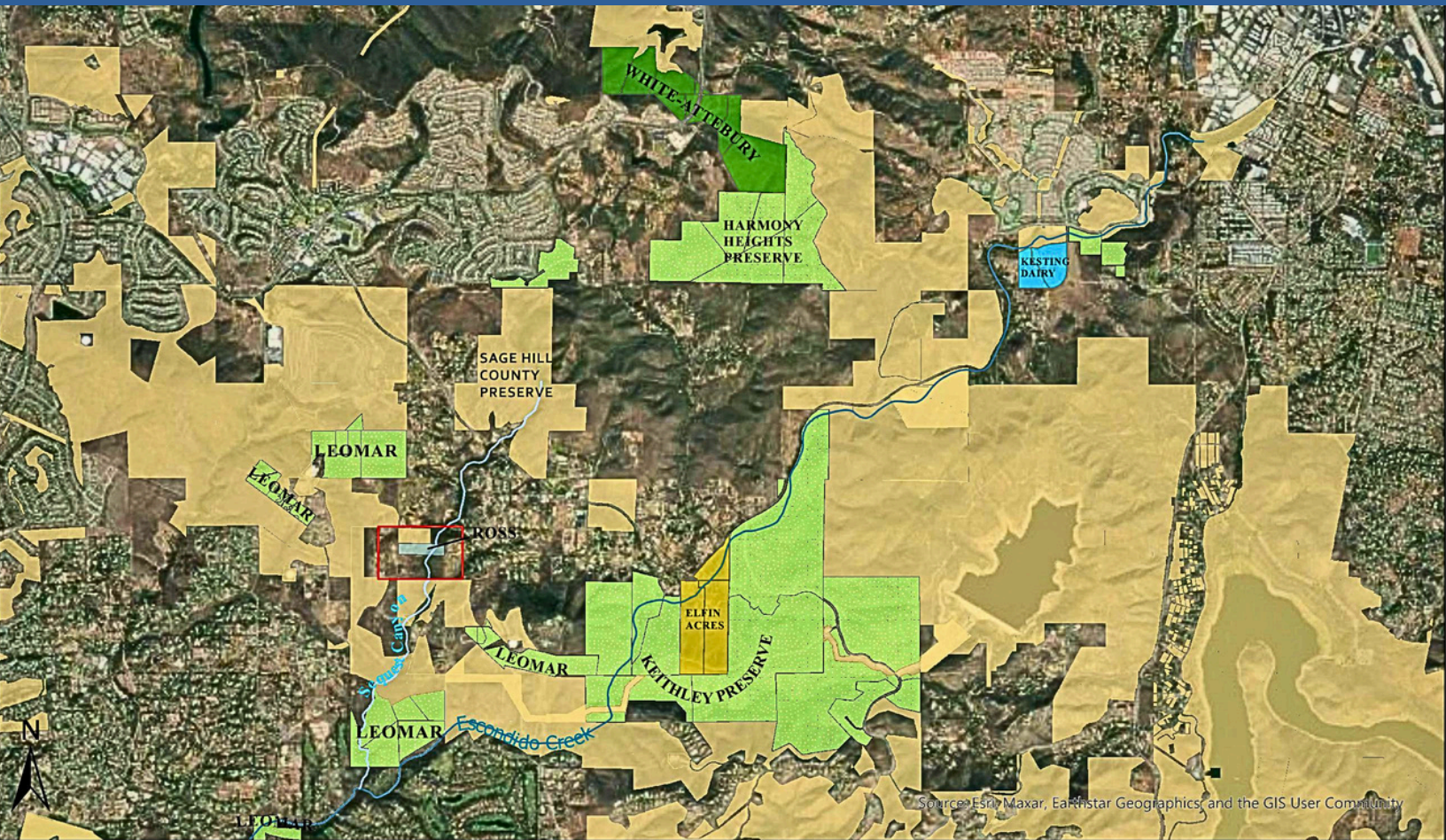


Lisa Ruder, President
board@escondidocreek.org

Sincerely,



Ann Van Leer, Executive Director
executive@escondidocreek.org



Source: Esri, Maxar, Earthstar Geographics, and the GIS User Community

ROSS REGIONAL MAP

Legend

SEAQUEST CANYON	CONSERVED LANDS
ESCONDIDO CREEK	ROSS (10 +/-)
Kesting Dairy (35 ACRES)	White Atterbury (159.9 ACRES)
ESCONDIDO CREEK CONSERVANCY	Elfin Acres (96 ACRES)



Connecting Conservation Corridors Update

by Executive Director Ann Van Leer

In 2024, the Conservancy received notice of three grant awards from the federal U.S. Fish and Wildlife Service, to fund half the cost to purchase its three *Connecting Conservation Corridors* properties, White-Atterbury (160 acres), Elfin Acres (98 acres) and Kesting Dairy (45 acres). The Conservancy is working with the state to provide it with the information it requires to authorize funding to match the federal awards.

The Conservancy worked closely with the property owners to secure purchase agreements to allow the purchases to proceed. Two owners, White-Atterbury and Elfin Acres, executed purchase and sale contracts. Fingers crossed if all remaining funds can be raised; we hope to close escrow on these two properties in late 2025.

A fourth conservation acquisition, the Ross property in Olivenhain, also advanced last year as a Conservancy grant to the state's 30x30 program was approved! The Conservancy hopes to close escrow on the Ross property mid-year 2025.

The Conservancy is diligently following news from Washington regarding its federal awards. Private funds are urgently required to help complete due diligence and get these properties across the finish line.

Thank you for your support!



SCAN TO DONATE

Thank You!

The Conrad Prebys Foundation

Our Special Donor Angels

Our Incredible Volunteer
Land Stewards



Photo: Donna Leon



Photo: Wikipedia



Turtle Project Update

by Preserve Manager Donna Leon

A survey in August of 2024, funded by a Conservancy Angel, led to the discovery of new populations of Southwestern pond turtles (SWPT) in Escondido Creek. SWPT are proposed for listing on the Endangered Species list as a federally threatened species, due to habitat loss.

More recently, a new individual SWPT was spotted downstream on a neighboring preserve managed by the San Diego Habitats Conservancy (SDHC). SDHC preserve manager Vince said he would have walked right by the turtle thinking it was an invasive red eared slider if it wasn't for the recent collaboration between the Conservancy, SDHC and Endemic Environmental during the 2024 surveys. The Conservancy collaborated and shared funds with SDHC which meant the SWPT benefited as both organizations learned more about their respective preserves. This happy result is additional evidence that we can do more together.

As Conservancy staff continue to search for funding for the Turtle Project, we also have continued to reduce invasive species and litter in and around the creek creating a better environment for all species.

Please consider donating to the Turtle Project!

SCAN TO DONATE



Connect to Nature through Yoga and Guided Hikes!

After suffering with back pain from several car accidents for over two decades, one of our preserve managers, Donna, found yoga to be extremely helpful and relieved her from a lot of her daily pain. Not only had her pain reduced, but she was sleeping better, and overall felt less stressed. Donna began to attend yoga classes on a daily basis and at times twice per day. After a few months the yoga studio owners noticed her passion and asked her if she was interested in becoming a teacher! She considered their offer and soon after registered for a 200 hour yoga teacher training. Once she graduated she began to teach trapeze yoga regularly and also began to plan a way to bring her new skills to the Conservancy and the outdoor environment. Yoga became a big part of her life, but she also knew nature and simply being outdoors was greatly beneficial to herself and others.

Donna is passionate about nature and yoga, which sparked an idea to apply for a grant to introduce people to both. With the help of her colleagues and a grant from the Prebys Foundation, the Connect to Nature through Yoga and a Guided Hike Program was born.






Being able to combine Donna's two passions was a dream come true. Thanks to the grant from the Prebys Foundation, the Conservancy now offers this great program, for all of 2025, free of charge.

Donna's goal was to help people reduce their physical pain and stress through movement, breath work, and the outdoors. Yoga followed by a guided hike is now offered at Boulder Outlook on a monthly basis. Donna also guides students during field trips in a fun and engaging yoga practice in order to foster a sense of community and self-awareness.

SCAN TO SIGN UP FOR AN UPCOMING EVENT



2024 Land Highlights

-  The Turtle Project begins, to help restore native southwestern pond turtles to Escondido Creek!
-  \$552,097 4-year grant to remove invasive plants and prevent fires successfully completed
-  1,400+ trees surveyed for damage by destructive invasive non-native beetles
-  Over 100 volunteers helped restore the land, many weekly, to enhance and protect the Escondido Creek watershed
-  Progress made on Connecting Conservation Corridors Acquisitions

Join us at the beautiful Mountain Meadow Preserve for our free *Connect to Nature Series: Guided Hikes + Yoga*, happening on the 2nd Fridays and 3rd Saturdays of each month through 2025!

Local Hands, Lasting Impact

by Preserve Manager Juan Troncoso

Community involvement in local non-profit organizations is critical. At the Conservancy, we offer a wide range of volunteer opportunities that allow individuals to actively participate in our mission to protect and restore the Escondido Creek watershed. Volunteers can engage in both hands-on short-term events or become part of a dedicated team working toward long-term habitat improvement. Both forms of volunteerism help shape the future of our landscape.

The Conservancy offers volunteer opportunities designed to meet various interests and skills. These include Land Stewards, Conservation Crew, Wednesday Work Group, and Shrub Club. Volunteers involved in these efforts are the backbone of our work, helping us maintain our preserves and push forward restoration and stewardship projects. However, there are also others, both private and non-profit, that lend their expertise to support the Conservancy.

One such group is LumberCycle.org, an organization that has been instrumental in helping us further restoration of the Sardina Preserve. Through their collaboration, we've been able to enhance our outreach, coordinate with additional partners, and ensure that restoration initiatives are advancing effectively. Similarly, MC Tree Service has supported us with the removal of woody debris from the preserve, making it more fire safe.

The Mountain Meadow Preserve benefits from the great work of the Wednesday Group volunteers. Every Wednesday morning, dedicated volunteers come together to work on hands-on restoration projects, planting native species, removing invasive plants, and maintaining the health of the preserve. Community members also contribute by donating plants which is crucial for the continued success of this project.

***We appreciate our
volunteers!***



SCAN TO VOLUNTEER



Hard-working Wednesday Group volunteers at the Patagonia Nursery at the Mountain Meadow Preserve. Photo: Linda Collins



Volunteers get an orientation before their deployment at the Conservancy's Quarry Preserve. Photo: Juan Troncoso



Photo: Escondido Creek

Thank You!

Escondido Community Foundation

Escondido Union High School

Escondido Union School District

Malk Nature Fund

California State Parks

SDG&E

California Coastal Commission

Rincon Band of Luiseno Indians

San Pasqual Band of Mission Indians



Photo: Keith Kelley

A New Chapter in Environmental Education: The Mountain Meadow Preserve Outdoor Classroom

by Education Director Ariel Reed

As demand for our outdoor education programs grew, we saw the need for a dedicated space to expand hands-on learning. In mid-2024, a grant from the Escondido Community Foundation allowed us to begin building an outdoor classroom at the Mountain Meadow Preserve.

With funding in place, we moved quickly—drafting plans, consulting experts, and relying on our dedicated volunteers. By winter, we had cleared the site, installed shade tarp poles, and started building benches from recycled eucalyptus. The classroom is taking shape with multiple teaching stations, a native habitat mural, and an informational kiosk, set for completion by fall 2025.

Once finished, this space will host expanded after-school and field trip programs with the Escondido Union High School District, as well as community and volunteer events. It will deepen connections to the Escondido Creek watershed, strengthening both our education and conservation efforts.



Photo: Keith Kelley



Photo: Keith Kelley



SCAN TO DONATE

2024 Education Highlights

- 3,000 kids served
- 205 classroom lessons
- 45 field trips

Outdoor Education Elevated Fundraising Event

In April of 2024, we hosted our first annual Education Department fundraiser and family festival at Mountain Meadow Preserve. With 80 attendees and \$50,000 raised, we engaged the community and shared our vision for expanding outdoor education.

Outdoor Education Blueprint

As we continued to grow in 2024, you could notice a recurring theme of building and expansion at the Conservancy. Over the year, our Education Director, an advisory committee, and stakeholders worked tirelessly to develop a blueprint that will guide our outdoor education programs for the next five years. Visit our [website](#) to learn more about our strategic goals and how we plan to shape the future of outdoor learning.



Join us!

October 25, 2025 at

**Mountain Meadow Preserve for
2025 Outdoor Education Elevated!**

Interpretive Center's New 3D Watershed Model

Thanks to funding from the California Coastal Commission's Whale Tail Grant Program, we were able to build an interactive 3D model of the Escondido Creek watershed. This new teaching tool has been integrated into Conservancy education programs and engages all visitors to the Elfin Forest Interpretive Center.

Habitats: Inquiry into Action

This marked our 6th year partnering with the Escondido Union School District's Conservation Consortium. Since 2019, we've reached every 3rd grader across 18 elementary schools, serving an average of 1,500 students annually with our Habitats program. This consortium, alongside nonprofit partners, provides programming to all TK-8 students in the district. We thank the Malk Nature Fund, the California State Parks Outdoor Equity Grant Program, and the SDG&E Environmental Champions Grant Program for supporting this initiative for 2024. **Please join us at Outdoor Education Elevated 2025!**

How to Engage?



Education Volunteer
Opportunities



DONATE TODAY



Photo: Keith Kelley



Photo: Laurel Perun

After School Enrichment Program: Schoolyard Safari

Launched in 2024, Schoolyard Safari established ongoing programs with Escondido Union School District, reaching 210 students across 11 schools. Through 8–10 in-class lessons each semester, 1st–5th graders explored nature up close, bringing the outdoors into their classrooms.

Habitat Restoration Field Trip Program

With support from NOAA Planet Stewards, we engaged 93 Escondido Union High School District AP Environmental Science students in hands-on restoration work. As our first official field trips to Mountain Meadow Preserve, students helped plant over 125 native plants across 0.6 acres while learning about habitat restoration processes and career paths.

Continued Tribal Partnerships

This year, we strengthened partnerships with local tribes, hosting outreach booths at events for the Rincon Band of Luiseño Indians and the San Pasqual Band of Mission Indians. We also collaborated with Rincon's environmental and education departments on a two-day summer program, engaging 25 youth and 8 interns in hands-on learning about riparian habitats and endangered species on their reservation.



Photo: Laurel Perun

Thank you!

We would like to express our deepest gratitude to the funders, individual donors, corporate sponsors, and dedicated volunteers who help make our programs successful. Your support plays a crucial role in bringing outdoor education to the Escondido Creek watershed, inspiring environmental stewards for generations to come.

Thank you for your continued commitment to our mission!



Photo: Keith Kelley

SCAN TO DONATE







Thank You!

Chris O'Donnell

Superior Redi-Mix

BFL Guardian Assets LLC

North County Supply

Hogue Asphalt

San Diego Chapter California Native

Plant Society

Rancho Santa Fe Foundation

SDG&E



ALL HANDS IN



A Blooming Fire-Safe Native Pollinator Garden Installed at Boulder Outlook

by Executive Director Ann Van Leer

Our vision for the remodel of an old ranch duplex into our office on the Mountain Meadow Preserve included the addition of a native pollinator garden that would be both beautiful and educational, to help people learn about using native plants in their home gardens. Many native plants are fire safe and especially if irrigated properly, as ours are. Thanks to help from the San Diego Chapter of the California Native Plant Society, the Rancho Santa Fe Foundation and SDG&E, in 2024 that garden was planted and has begun to bloom.

Want to learn about native plants and help the Conservancy tend the garden at Boulder Outlook?

Contact Executive Director Ann Van Leer at executive@escondidocreek.org. About 1x a month, we will take a stroll around the yard, weeding and trimming to keep it looking nice. It's a great way to learn about native plants!

Thanks to Extraordinary Volunteer Chris O'Donnell!

By Executive Director Ann Van Leer

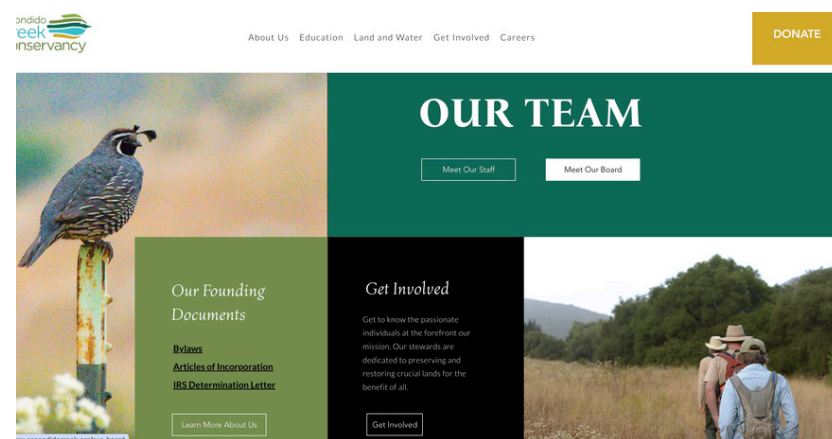
Good websites have become ubiquitous, a must-have element for any successful non-profit or business. Keeping a website current, and relevant, is time consuming and can be expensive. The Conservancy's old website hadn't been updated in a very long time, and we needed to refresh old material and links. In a busy non-profit, finding time (and money) to do so seemed elusive.

After a few false starts our site upgrade was on pause until..an amazing volunteer and recently retired software engineer, Chris O'Donnell, raised her hand and offered to help. She did an incredible job, and we now have the Conservancy's official website in a more user-friendly program, and it is BEAUTIFUL.

Thank you, Chris!



*Incredible volunteers,
Mike and Chris O'Donnell.*



2024 Operations Highlights



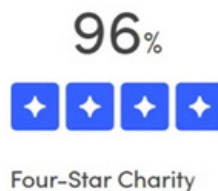
Fire safe native plant pollinator garden installed at Boulder Outlook



Another clean audit was completed, evidence of the Conservancy's stellar financial management



The Conservancy held monthly activities that engaged hundreds of people in watershed activities including hikes and hands-on restoration



Two Angels Step up to Help Advance Research on Small Creatures

by Executive Director Ann Van Leer

You may be wondering, in an age of cellular service, why the Conservancy's office is now sporting antennas. Welcome to www.Motus.org, an international collaborative research network that uses automated radio telemetry to track small flying organisms (now birds, bats and insects). Thanks to three wonderful science and bird-loving donors, the Conservancy office now is host to a Motus receiver! The idea behind Motus was to spread these receivers all over the world while, in parallel, researchers design collaborative projects to track animal movement during the spring and fall migrations. While the San Diego County network is new, the Conservancy's receiver is active. If you want to see what is flying around, go to www.motus.org, Explore, Motus Data. You can "fly" to all the world's stations, including ours. With the Motus now up and running, the Conservancy hopes to identify funds to do site specific (not necessarily aligned with seasonal migrations) tracking on Conservancy preserves.

Thanks to our angels for launching this exciting project!



Newly Installed Motus at Boulder Outlook



National Recognition Comes at a Cost

by Rita Petrekova, Director of Finance and Operations and
Leonard Wittwer, Board Treasurer

In August of 2021, the Conservancy was awarded accreditation by the national Land Trust Accreditation (LTA) Commission. It is a mark of distinction, recognizing land trusts that meet the best in class national quality standards established by the land conservation community for land acquisition and stewardship, fundraising, business practices and corporate governance. This accreditation assures our partners and donors that The Conservancy is functioning at the highest levels of integrity. The exercise was strenuous and extremely detailed, but it allowed us to take a deeper look at all our processes, policies and finances, refining and improving as a result.

While the benefits of national recognition are many, the costs associated with accreditation are high. Performing annual audits of our financial statements, following LTA guidelines, annual membership, and legal costs are just a few to mention. During these annual reviews, auditors seek to ensure the information was presented fairly, in all material aspects, in accordance with the accounting principles generally accepted in the United States. Every year the Conservancy has received a clean audit, most recently in 2024.

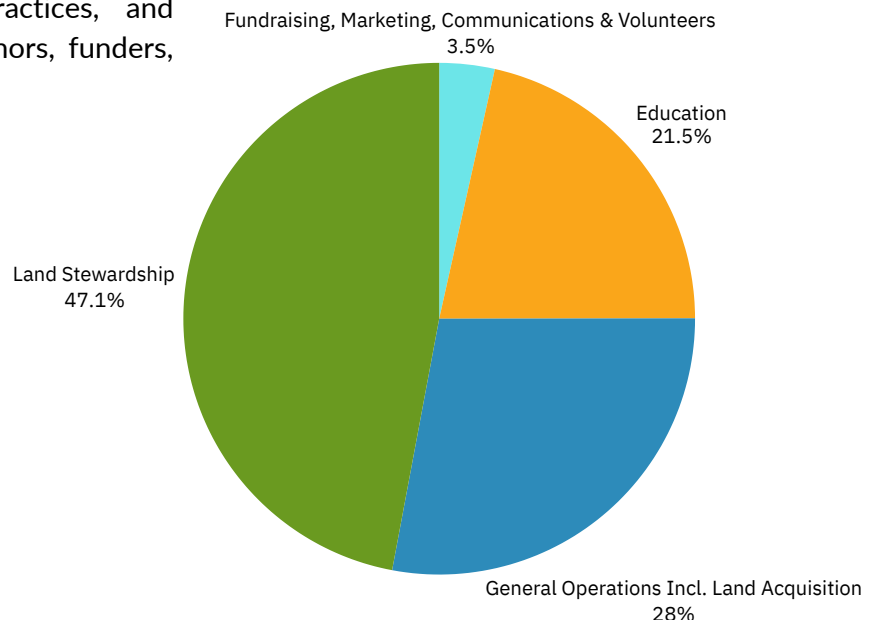
The Conservancy's LTA accreditation expires in 2026; the Conservancy's Board of Directors now has a decision to make. Accreditation is national recognition the Conservancy dreamt of achieving for decades. Renewing our accreditation helps ensure our Conservancy stays current with best practices, and continually builds the confidence of partners, donors, funders, and the public.

Having experienced the process four years ago will certainly lessen the burden of the detailed undertaking, however the annual costs remain high. Currently, we are attending virtual meetings with the Accreditation Commission to prepare for round two. The Board of Directors has until November of 2025 to make this important decision. The LTA pre-application is due in February of 2026 and the application in May of 2026.

As a Conservancy supporter, we want to hear from you about this important decision. Should the Board of Directors renew its LTA accreditation? Let us know your thoughts! Contact: information@escondidocreek.org.



Snapshot of 2024 Expenses: Total \$1,285,333



2024 DONORS

Thank you to our wonderful donors!

\$100,000 AND ABOVE

Anonymous**

\$50,000 TO \$99,999

Anonymous

\$25,000 TO \$49,999

Baumgartner Family Trust
William Sherrard
The San Diego Foundation - Anonymous

\$10,000 TO \$24,999

Anonymous
The Molina Family Foundation
Anonymous
Amy and Ed Van Liew

\$5,000 TO \$9,999

Nona and Steve Barker
Martha Blane
Concannon Family Foundation

Integrated Systems Solutions, Inc.
Lisa and Jim Ruder
Surface Optics

Celine and Greg White*
Leonard Wittwer

\$1,000 TO \$4,999

Anonymous
The Bayat Family
Jerry Block
Helen Bourne
Dorothy Caldwell
Linda Collins
James Ellerbrock
Karin and Alfred Esser
William Fawcett
Samantha and Galen Foulke
Habitat West
Hartman Family*

Gigi Hurst**
Ed Jablonski
Johnson Controls Charity Custodial Account
Christopher Khoury
Kevin Korb
Joan Layte
Maureen and Greg McBain
Frauntene and Timothy McLarney
Richard Murphy
Olivenhain Municipal Water District
Palomar Audubon Society
Rancho Guejito Corporation

SDGE
Marc Shaffer
Joy Singleton
Linnea Spears Lebrun
Constance and John Stevenson
Tamara and Lindsay Stewart
Katie and John Stokes
Carolyn and Jeff Swenerton
Ann Van Leer**
Walton Law Firm APC
Patricia and Donn Wilber
Woman's Club of Escondido

\$500 TO \$999

Brent Alspach
Aquasolver LLC**
Victoria Cabot
California Native Plant Society

Ruth Collings
Sophie Cosgrove
Michael Cosgrove
Cultural Edge Consulting

DLM Engineering
Mark Dowling
Elfin Forest Iron Ranger
Susan Hedrick

2024 DONORS

We cannot do this important conservation work without you!

\$500 TO \$999 (cont.)

Jewish Community Foundation
California Tree Service Inc.
Daniel Kucharski
Leslie Kuhn
Michelle and Ebin Lanfried
Pat and Steve Lending
Kelley Yve Martin

Paul McClellan
Russ McLee
Marianne Nelson
O'Leonard Family
PayPal Giving Fund
Gwyn Quillen

W. Juergen Schrenk and
Ruth Schrenk-Halfenberg
Jason Spurgeon
Kimberly Tullis
Gail and Frank Twohy
Sharon Worman-Bryne

\$250 TO \$499

Timothy Beck
Susan Bedford
Patricia and Peter Benson
Blanchard for Others
Andrew Carson
Anthony DeBellis
James Determan
Harold Dunn
Douglas Gillingham

Janice and Edward Hall
Linda and Bruce Hamilton
Amy Hite
Rayna Krohn
Shelly Kolkey
John Lasky
Kim MacConnel
Howard Magoon
Cheryl and Raymond Meek
Krystle Miller

Bonnie Packert
Patagonia*
Jack Peterson
Ida Rigby
David Susan and Stephen*
Michael Simon
Steven Slater
Sharon Snyder
Kathryn Sparks

UNDER \$250

Michael Allen
America Online Giving Foundation
Giovanna Ayala
Sandra Bartsch
Stephanie Bell
Traci Bentson
Lucy Berk
Judith Bernstein
Shirley Ann Bernstein
Nancy and Mike Biele
Seevani Bista
Mary Borevitz
Mark Bower
Allison Bray
Wendi Brick
Kathryn Bridge
Chondra and Ben Brown
Michelle Buchanan
Nancy Buchmeier
Ricardo Calderon
Jennifer Chalison
Deborah Chappie
Neha Chhabra
Shelby Clark
Susan Clark
Madison Cobos
Maureen Cummings
Tracy Dale
Bruce Dammann
Mary Dawson
Marielle Decker
Kathleen DeLoe

Jan Dinsmore-Block
James Dollins
Linda Dollins
Jo-Ann Doran
Howard Dreskin
Dave Drewelow
Janet Edwards
Beth Ehsan
Dave Fege
Laurie Ferrer
Camille Fitzpatrick
Megan Fleming
Kathleen and Laurence Flora
Janeal Fore
Andrew Freeborn
Amy Fritzenkotter
Saul Frommer
Mary and Roy Garrett
Barbara Gibson
Elizabeth Gilpin
Chris Glatts
Martin Greenberg
Jeffrey Haack
Thomas Hamilton
Tom Hamilton
Dana and Alan Hartley
Kekoa and Walter Haslop
David Herbert
Karen Hershman
Drew Hubbell
Davielle and Mark Huffman
Hunter Industries

Alison Inglis
Sandra and Bob Irwin
Nicole Isbell
Joy Jackson
Michelle and Larry Jansen
John Jaworski
Mariela Jimenez
Justice Outside
Lynn Kelley
Colin Khoury
Alta Kisselburgh
Robin Koop
Carolyn and Anthony Kurtz
Sabine and Jon Kurz-Sherman
Matthew Lacy
Lynne Lau
Teresa and Michael Lea
Sean Leahy
Constance and Jack Lee
Susann and William Leininger
Donna Leon
Nancy Lindsay
Corrine and William Lines
Glenna Long
Kellie Long
Fernando Lopez
Clark Mahrdt
Jonathan C Marshall
Lois Martin
Consuelo Martinez
Marco Martinez
Michael McDonald

Hope McGinn
Elizabeth and Richard Mercurio
Anne Middleton
Brian Midili
Christine Miller
Ronald Miller
Xochitl Minor-Garcia
Laura Mitchell
Connie and John Moore
Marilyn and William Morgan
Christopher Morris
Barbara and David Mounier
Leonel Munguia
Cheryl and Tom Munnecke
Mary Murphy
Joan and Charles Neumann
Melinda Nevins Benson
Bill Nieman
Vanessa Nieman
April and Kyle Noren
Dawn Nowlin
Hajime Ohno
Barbara Orr
Warren Otto
Caryl Parrish
Heidi Paul
Ed Philbrick
Jamie Phillips
Alicia and Michael Quadrozzi
Ariel Reed
Samantha Richter

Valerie Rogers
Esteban Rodriguez
Sanam Ross
Winona and Peter Rowat
Dennis Schepman
Larry Schultz
Donna and Leonard Selvig
Stuart Shaffer
Jon Sherman
Christopher Sigel
William Simmons
Darrell Snook
Brigette Soto
Brittany and Joel Stalica
Peter StClair
Denise and David Stillinger
Mary and Wayne Strong
Tyler Thomason
Thomsen Steve
Timothy Ulman
Gerald Varty
Lilo Vasquez
Peggy and Donald Watson
Mary and Thomas Webb
Lisa Wesser
Kristina West
Linda and Don Whetstine
Chalice Withsire
Michael Wittmer
Lucy and Richard Wold
Ken Edward Zahn

* In kind

** Cash and In Kind

PLANNING FOR TODAY AND TOMORROW

Endowments provide security and allow for creativity. Endowment funds are invested so the Conservancy can run its programs and operations from the earnings. Your major gift to an endowment helps the Conservancy become more sustainable and grow into the future.

ENDOWMENT GOALS

OPERATIONS FUND - \$8 MILLION

To support highly effective professional management and administration to make certain acquisitions are successful because the land can't save itself.

EDUCATION FUND - \$2 MILLION

To seed the future so we can always deliver outdoor education opportunities to local youth and adults.

LAND FUND - \$4 MILLION

To strategically target lands needing protection and care for lands we manage.

BOULDER OUTLOOK - \$350,000

To erase the debt on our office while creating a fund for maintenance.

ADDITIONAL WAYS TO SUPPORT

VOLUNTEER

BECOME A KEEPER OF THE CREEK MONTHLY DONOR

JOIN THE LAND LEGACY SOCIETY AND REMEMBER THE CONSERVANCY IN YOUR ESTATE

Contact executive@escondidocreek.org for more information on how to donate to an endowment or to answer any additional questions about supporting the Conservancy.

THANK YOU FOR YOUR SUPPORT

Escondido
Creek
Conservancy



Photo: Chris Gilbert



CONTACT US

information@escondidocreek.org
www.escondidocreek.org
PO Box 460791
Escondido, CA 92046
760.471.9354
EIN: 33-0497525